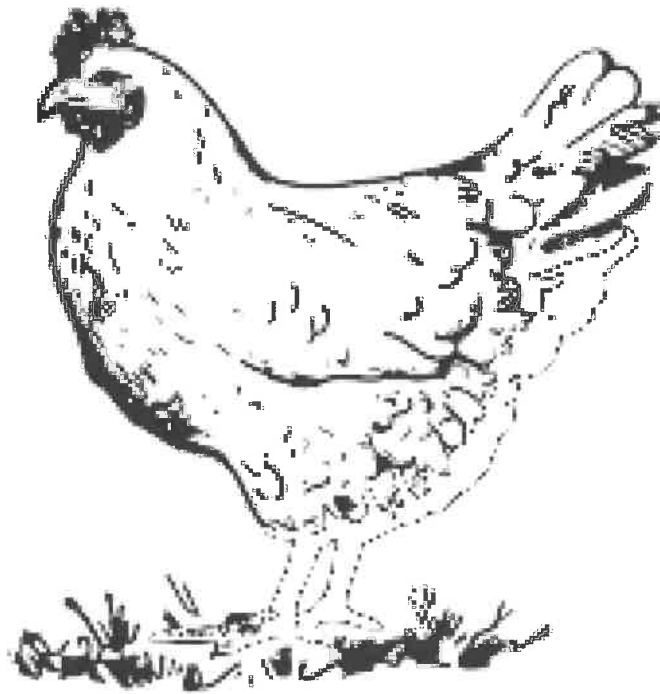


Poultry



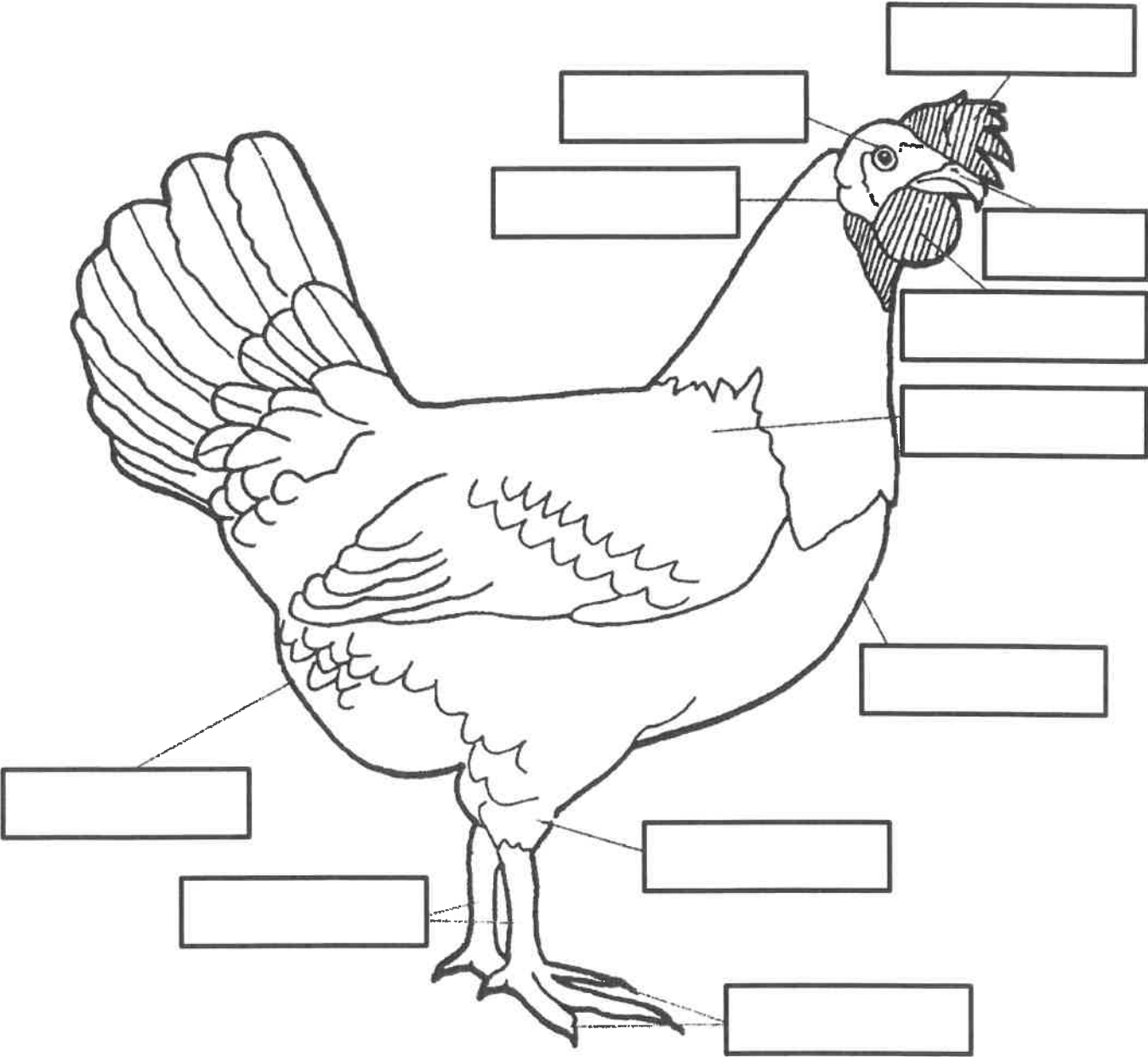
7 year old Project Record



Name: _____

Parts of a Chicken

Color and label the parts of a chicken.



Use each word only once:

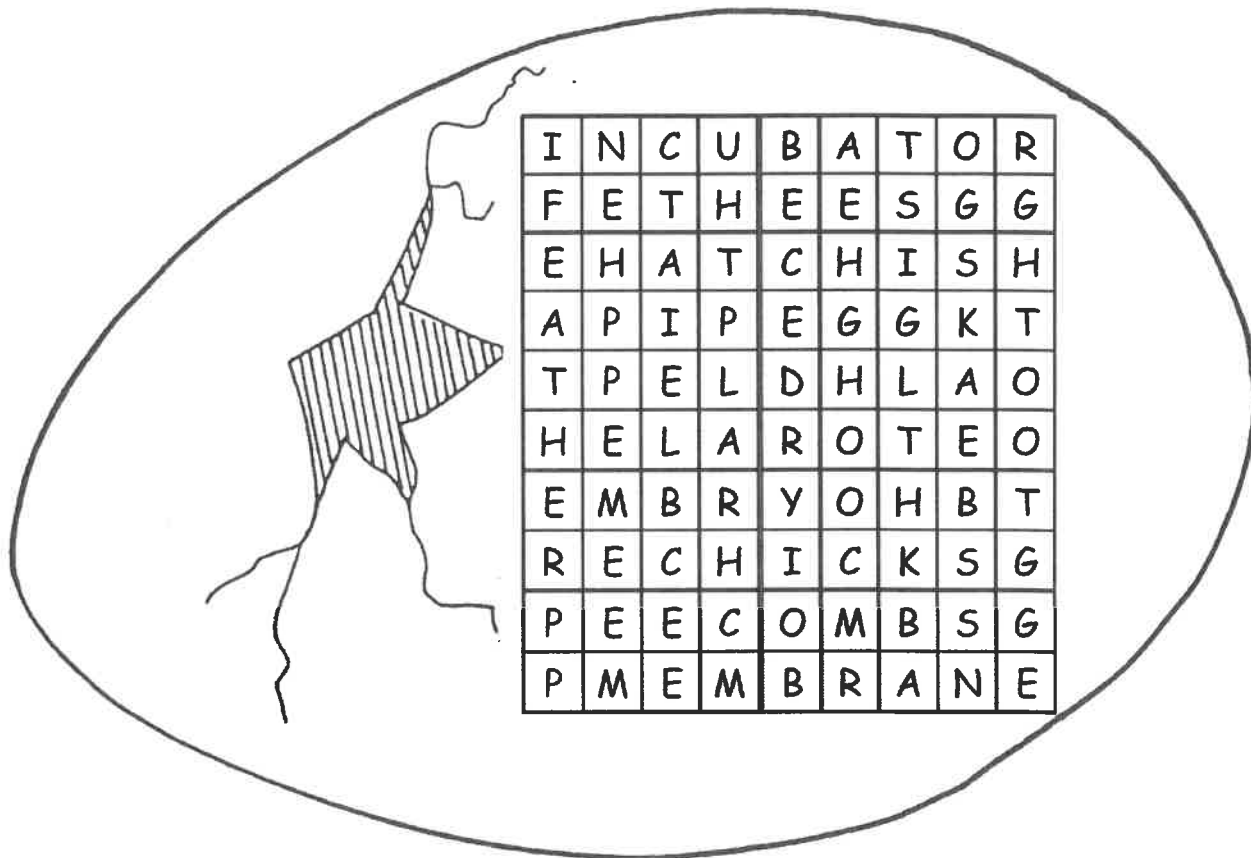
beak
eye
toes

breast
hock
vent

comb
shanks
wattles

ear lobe
shoulder

Hidden Words



Circle the hidden words on the list. The words can be hidden up, down or diagonally. When you have finished, use the left over letters to find a message. What is the message?

The message is _____

| Words to find | | |
|---------------|---------|-----------|
| egg | hatch | egg tooth |
| embryo | feather | hen |
| membrane | shell | beak |
| incubator | yolk | combs |

Activity 8

MORE YOLK OR MORE WHITE?



Question: Does an egg have more yolk or more white?

Hypothesis: I think the egg will have more _____.

Materials: 2 raw eggs
an egg separator
a clear glass
2 graduated cylinders

Procedure: Break 1 egg into the separator. Observe the amount of white and yolk. Measure the amount of white by pouring it into the graduated cylinder. Measure the amount of yolk by pouring it into the graduated cylinder. Record the readings.

Data: Measurements: yolk = _____ mL white = _____ mL

Observations: The egg had _____ mL more _____
how many? yolk or white

Conclusion: There is more _____ in an egg.
yolk or white

