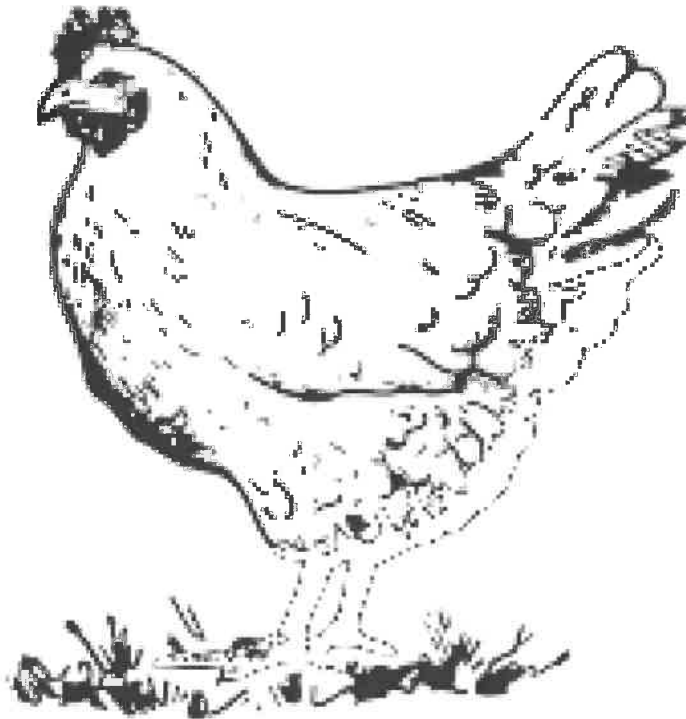


# Poultry



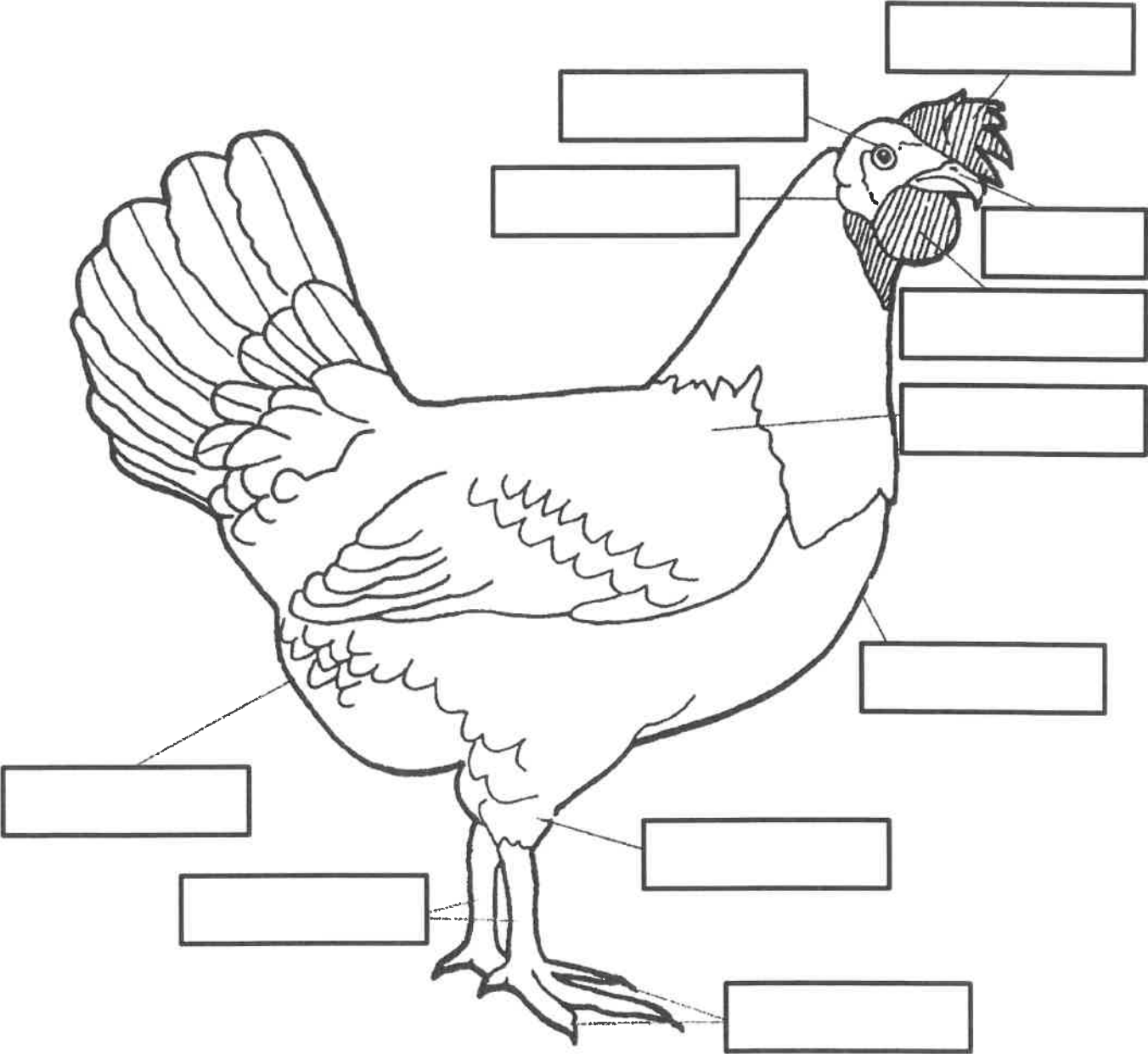
**7-8 year old Project Record**



**Name:** \_\_\_\_\_

# Parts of a Chicken

Color and label the parts of a chicken.



Use each word only once:

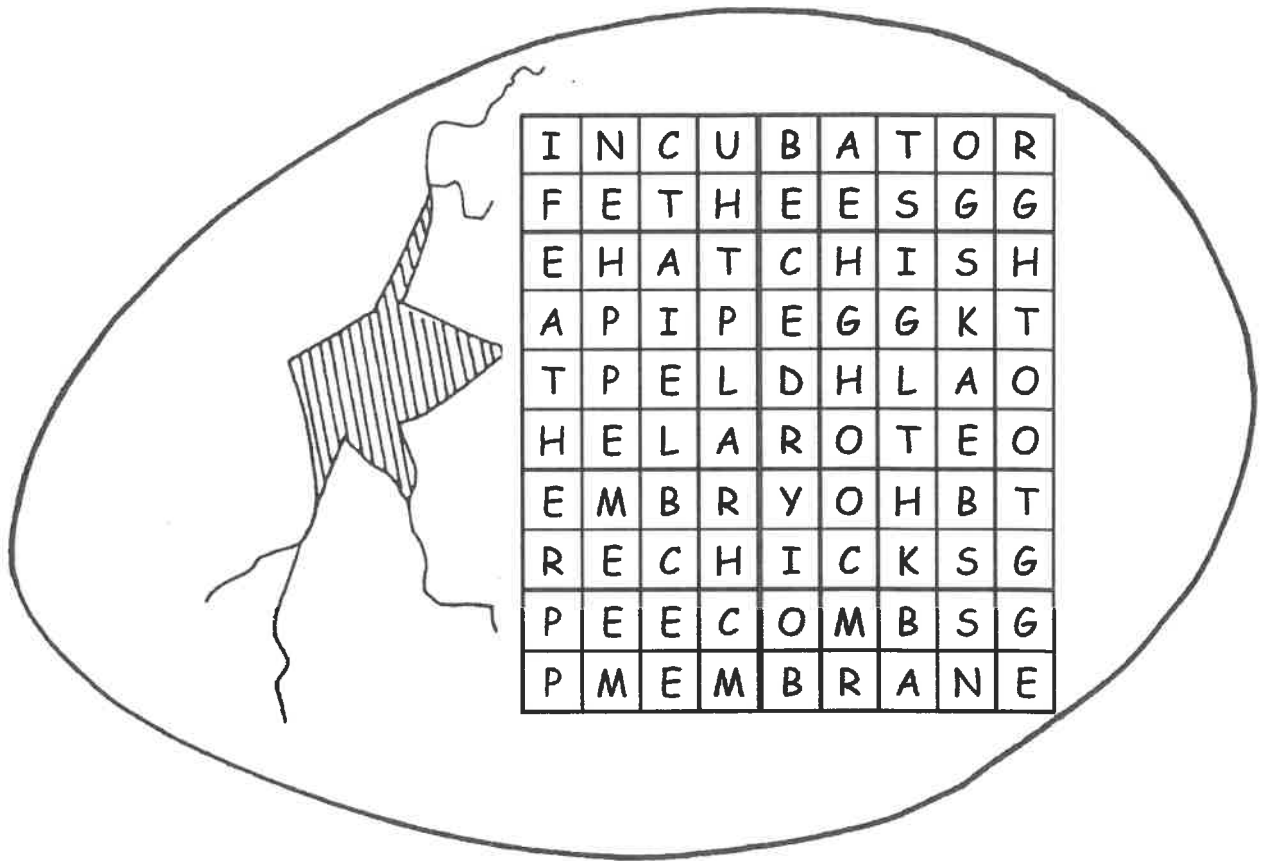
beak  
eye  
toes

breast  
hock  
vent

comb  
shanks  
wattles

ear lobe  
shoulder

# Hidden Words



Circle the hidden words on the list. The words can be hidden up, down or diagonally. When you have finished, use the left over letters to find a message. What is the message?

The message is \_\_\_\_\_

Words to find		
egg	hatch	egg tooth
embryo	feather	hen
membrane	shell	beak
incubator	yolk	combs

Activity 8

## MORE YOLK OR MORE WHITE?



**Question:** Does an egg have more yolk or more white?

**Hypothesis:** I think the egg will have more \_\_\_\_\_.

**Materials:** 2 raw eggs  
an egg separator  
a clear glass  
2 graduated cylinders

**Procedure:** Break 1 egg into the separator. Observe the amount of white and yolk. Measure the amount of white by pouring it into the graduated cylinder. Measure the amount of yolk by pouring it into the graduated cylinder. Record the readings.

**Data: Measurements:** yolk = \_\_\_\_ mL      white = \_\_\_\_ mL

**Observations:** The egg had <sup>how many?</sup> \_\_\_\_ mL more <sup>yolk or white</sup> \_\_\_\_\_.

**Conclusion:** There is more <sup>yolk or white</sup> \_\_\_\_\_ in an egg.

---

---

