

# Table of Contents

Experiential Learning Model - 5

## LESSON ONE - Introduction to Bees and Pollinators - 8

Youth will explore habitats of honey bees and native bees and consider ways bees adjust to changes in their environment.

Lunchbox Links  
Pollinator Posters



## LESSON TWO - Bee Anatomy - 23

Youth will observe and discover the different parts of a bee and what function they serve.

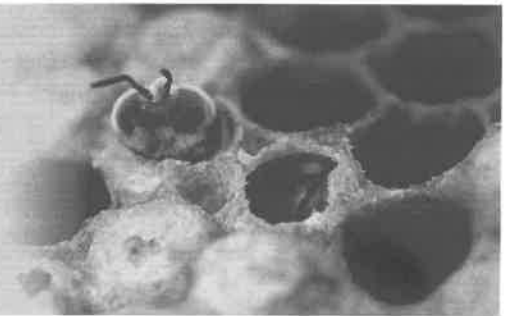
Creature Feature  
Garden Observations  
Upcycled Build a Bee



## LESSON THREE - Bee Life Cycles - 41

Youth will investigate the life cycle stages of bees and explore their similarities and differences.

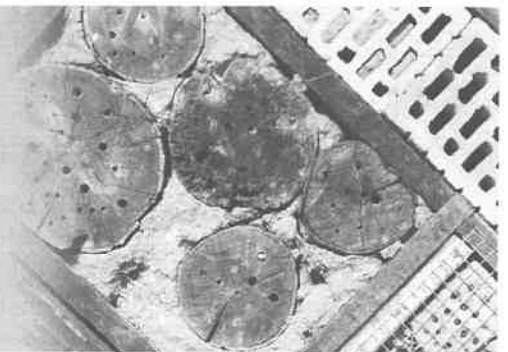
Metamorphosis Mix-Up  
Honey Bee Bookmark  
Mining Bee Life Cycle Model



## LESSON FOUR - Bee Homes - 52

Youth will study the basic shelter needs of bees and the different types of nests they create.

Busy Beekeepers + Hive Demonstration  
Sweet Treats  
Honey Bee Frame Drawing  
Mason Bee Mansion

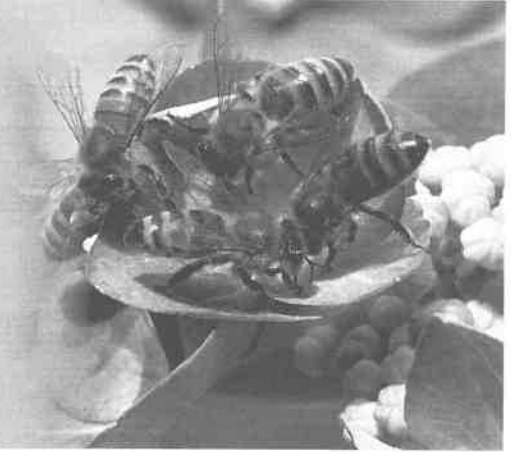


# Table of Contents

## **LESSON FIVE - Bee Behavior and Roles - 71**

Youth can explain how pheromone communication works and the purpose of three honey bee dances: waggle, round and shiver. They can also name examples of the types of bees in a honey bee colony: drone, queen, worker.

Smell and Tell  
Waggle, Round, and Shiver  
Pollinator Power  
Honey Bee Plays



## **LESSON SIX - Bee Habitats - 86**

Youth will summarize what honey bees and native bees need to grow and thrive. They will explain ideal conditions and food sources and the regional differences.

Pollinator Paradise



## **LESSON SEVEN - Bee Conservation - 99**

Youth will summarize ways that humans can protect the environment or improve conditions for the growth of bees and pollinators. They will communicate solutions to reduce the impact of human on land, water, air and other living creatures in their local ecosystem.

Stewardship Board Game  
Bee Button Blitz  
Bee Extemporaneous Speaking  
4-H Presentations, Record Books, Essay, Insect Collection



REFERENCES - 120

APPENDIX

GLOSSARY

ASSESSMENTS

CREDITS

